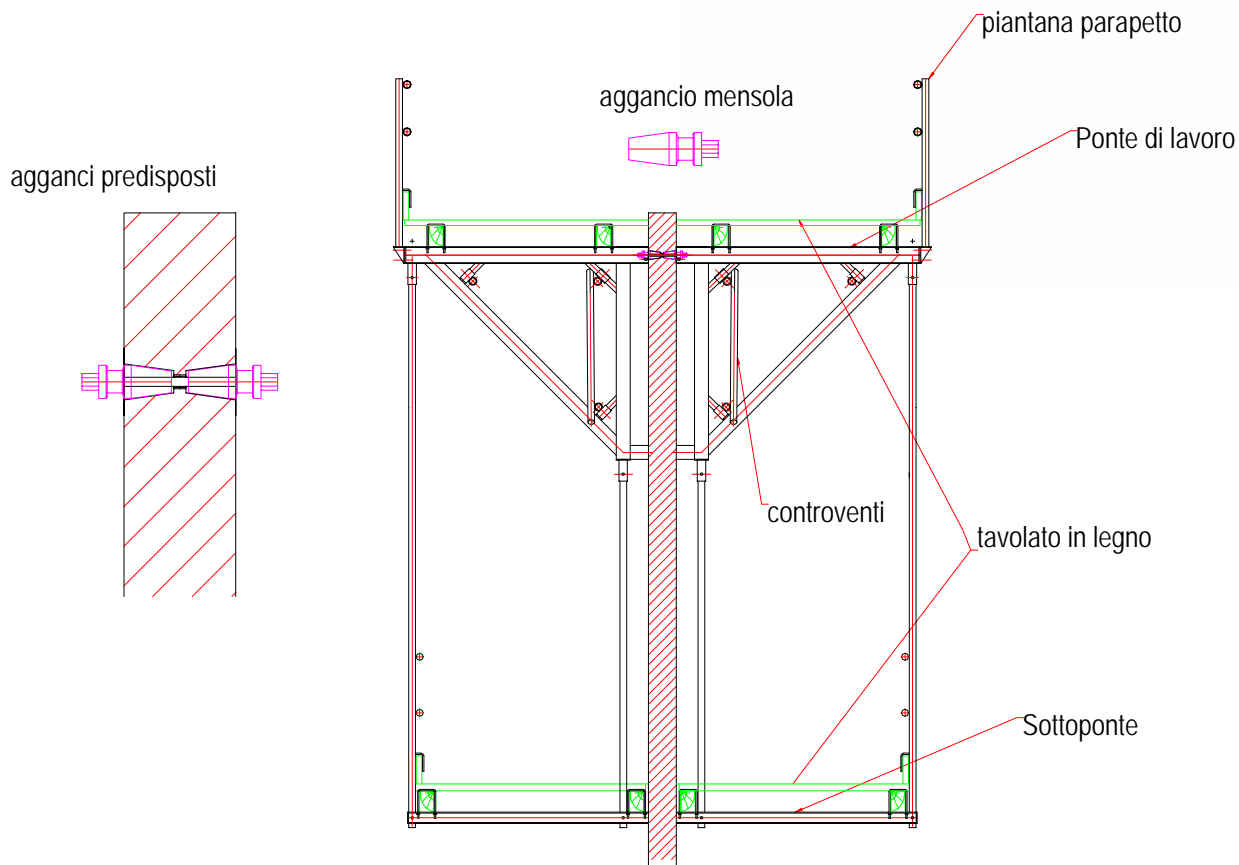


# SISTEMA B23

Lavoro : Attrezzatura per elevazioni a ripresa di getto

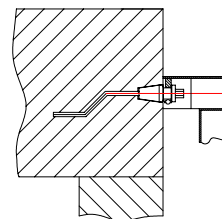
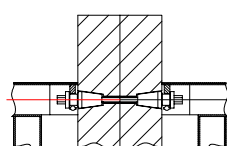
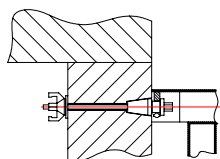
Sotto riportata scheda tecnica particolari sistema B23 di ripresa getto in elevazione



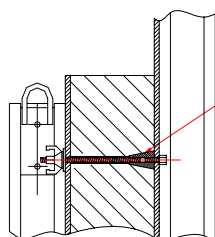
A) ancoraggio ad una sola parete tirante recuperabile

B) ancoraggio a doppia parete tirante recuperabile

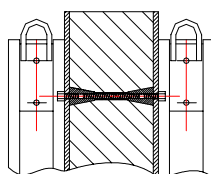
C) ancoraggio ad una sola parete tirante a perdere



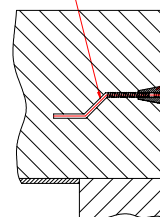
### FASE DI ANCORAGGIO



cono preparatore



ancoraggio a perdere



cono preparatore

### FASE DI PREPARAZIONE